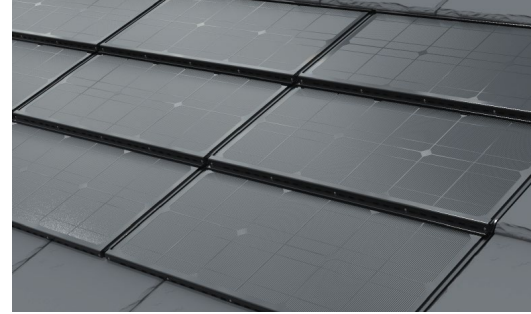


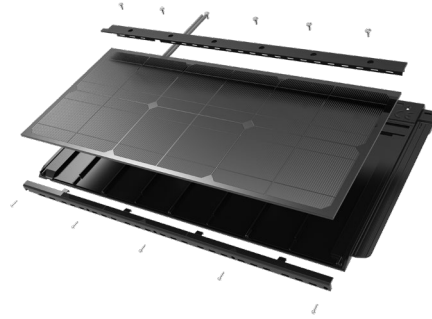
envirotile PV[®]

A NEW TYPE OF SOLAR ROOF SYSTEM FOR A NEW TYPE OF WORLD – ELEGANT, EFFICIENT, STORMPROOF



With the launch of the envirotile PV solar roof tile, we are pleased to introduce the first fully integrated solar roofing system that delivers on both form and function by giving an aesthetically pleasing appearance as compared with traditional solar panels that are attached to an existing roof covering.

envirotile PV has been conceived and designed to fully integrate into our existing market leading lightweight roof tile system, envirotile, incorporating exactly the same patented and award winning 8 point fixing system **8FIX**, making our solar solution both attractive, functional and also extremely resistant to high winds conditions.



- Tested to MCS Standards MCS012 for weather tightness and wind uplift.
- Must be used in combination with an envirotile roofing system and our fire tested **Envirolay FR** underlay.
- In the unlikely event of a failed or damaged PV module, this can be replaced without the need to remove any tiles.
- Includes cables and MC4 connections to connect to adjacent tiles.
- Sold in boxes of 8 tiles, provides 200w per box (25w per tile).
- Overall tile dimensions 600mm x 362mm x 20mm (PV unit 593mm x 271mm).
- Allow for 605mm width per tile when installing.



envirotile PV power generation and appliance consumption examples;
5 tiles receiving 8 hours of sunlight per day, will provide an indicative 1KWp of power per day.

1 tile can run 3 LED light bulbs.

2 tiles can power a laptop, or a ceiling fan.

A **5kw system**, would equate to 200 EnvirotilePV tiles and this would generate between 5,400 to 9,000 kWh per year, which is typically enough power for the average three-person UK household that has normal power usage habits.

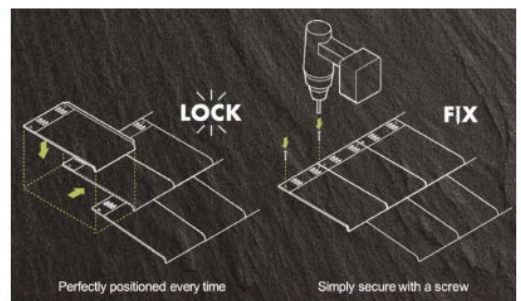


Green Sustainable Products Company Ltd

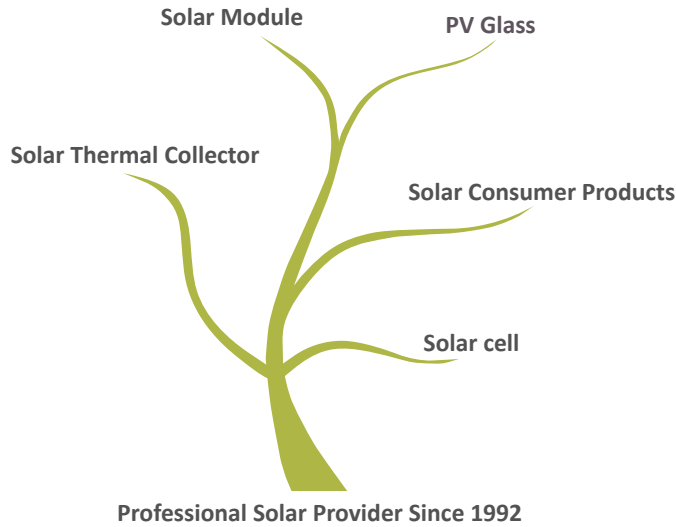
10 Park Plaza, Battlefield Enterprise Park,
 Shrewsbury, Shropshire, SY1 3AF

0845 269 7137




www.envirotile.info





PRODUCT CATEGORIES



KEY FEATURES

-  Plus power tolerance: +3%
-  Independent research anti-reflective and self-cleaning glass surface reduces power loss from dirt and dust
-  Excellent performance under low light environments, create better kWh/kW ratio and product average 2-3% more electricity

BEST QUALITY

-  Junction box and bypass diodes guarantee the modules do not overheat and avoid the "hot spot effect"
-  100% EL double-inspection ensures modules are defect free

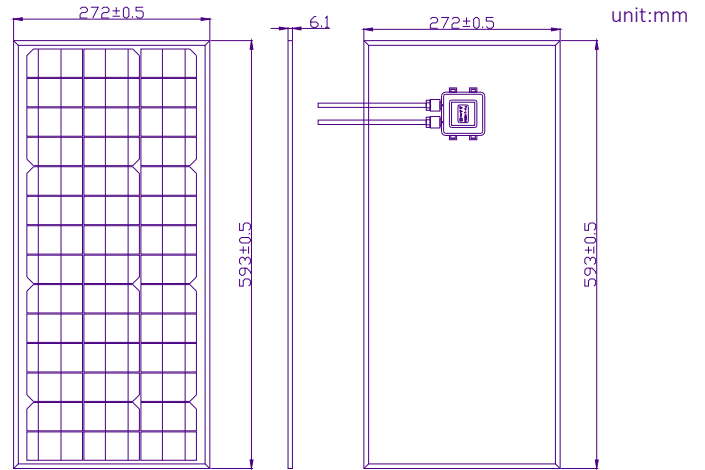
WARRANTY

10 Years Quality Warranty.

CERTIFICATION



PV PANEL MECHANICAL DRAWINGS



PV PANEL MECHANICAL SPECIFICATION

Cell Type	MONO Crystalline 78×39mm
Number of cells	42pcs
Dimensions	593×271×6.1mm
Front Glass	3.2mm Low iron tempered glass
Frame	Aluminum Alloy Groove
Junction Box	PV-LH0806
Output Cables	0.6m, 4mm ² , MC4 Compatible

ELECTRICAL CHARACTERISTICS

PERFORMANCE AT STANDARD TEST CONDITION (STC: 1000W/m², 25°C, AM1.5)

Module Series	TPS-105S(42)-25W
Maximum Power at STC (Pmax)	25W (+3%)
Short Circuit Current (Isc)	3.82A
Open Circuit Voltage (Voc)	8.40V
Maximum Power Current (Imp)	3.57A
Maximum Power Voltage (Vmp)	7.00V

ABSOLUTE MAXIMUM LIMITS

Parameters	Unit	Rating
Operating Temperatures	°C	-40 to +85
Storage Temperature	°C	-40 to +85